



## A1Touch Solution BV

Hogeweg 21  
6367 BA Voerendaal  
The Netherlands

☎ : +31-(0)45 574 81 90

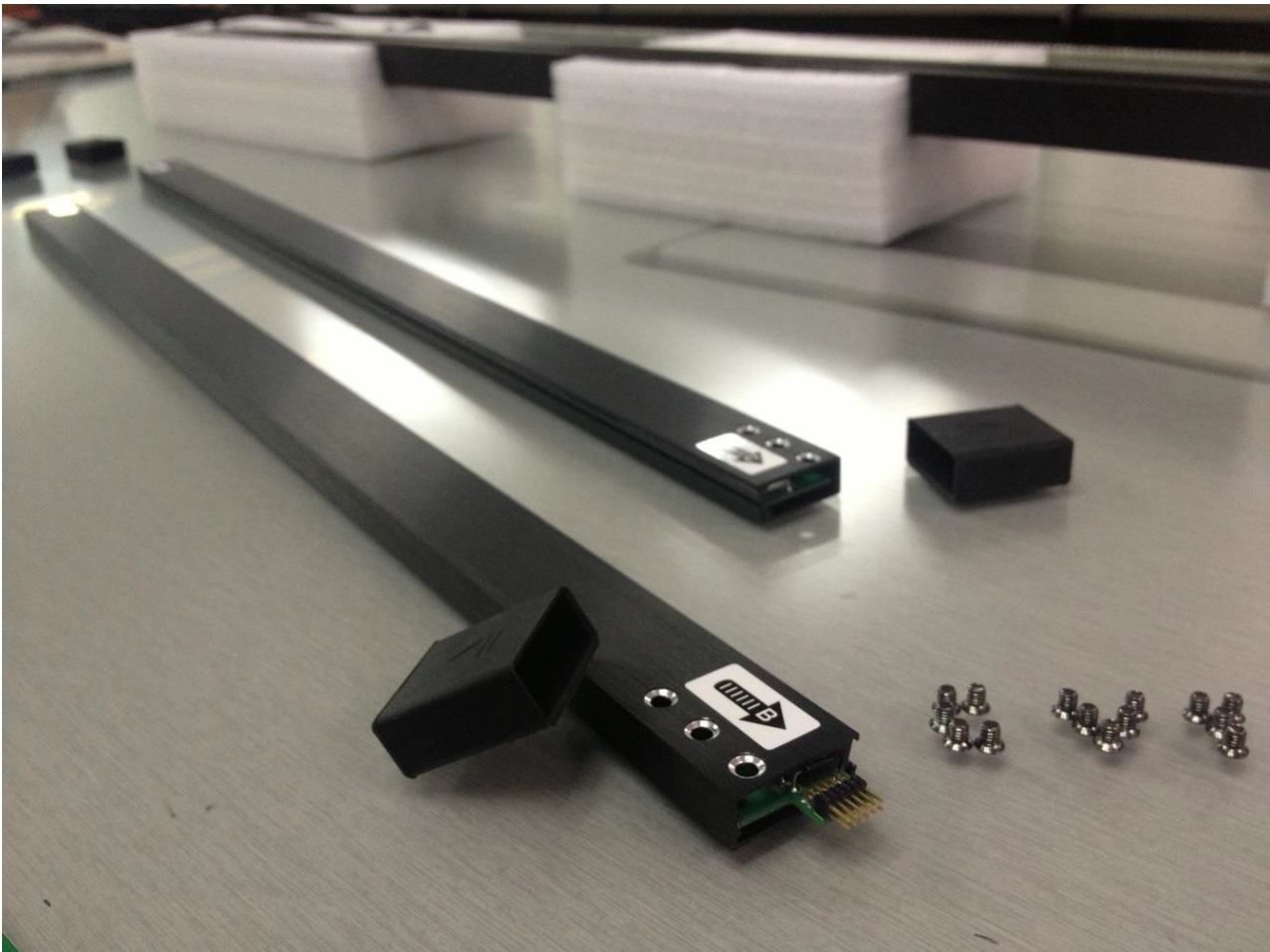
📄 : +31-(0)45 574 81 91

✉ : [info@A1TouchSolution.nl](mailto:info@A1TouchSolution.nl)

🌐 : [www.A1TouchSolution.nl](http://www.A1TouchSolution.nl)

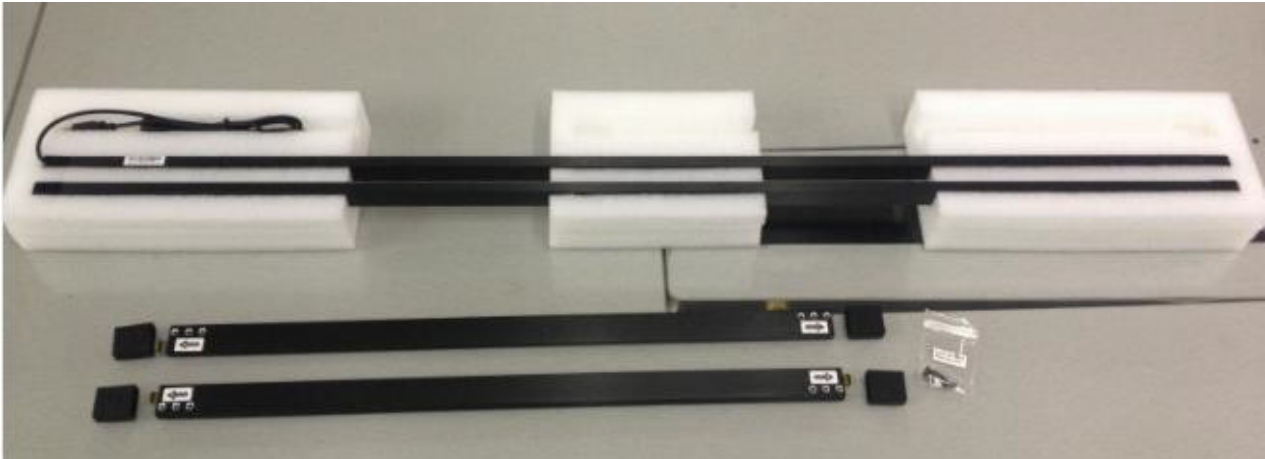
# Assemble User Manual

---



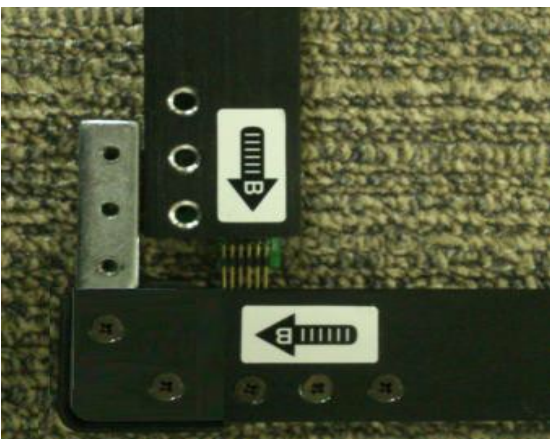
**Accessory list (as below pic):**

- 1. X axis transmitting tub : 1 PCS
- 2. Y axis transmitting tub : 1 PCS
- 3. Y axis receiving tube : 1 PCS
- 4. X axis receiving tube : 1 PCS
- 5. Screws (KM2.5×4mm) : 14Pcs (2pcs backup)



**Step 1 :**

Match the NO. on the touch frame (No. A match No.A, No.B match No.B, No.C match No.C ,No.D match No.D) Same in case of numbers..

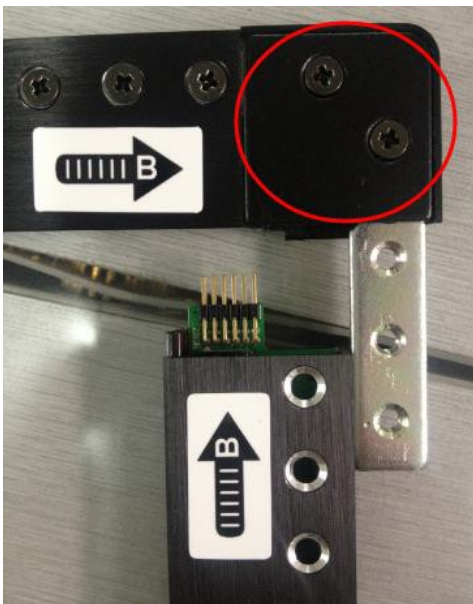






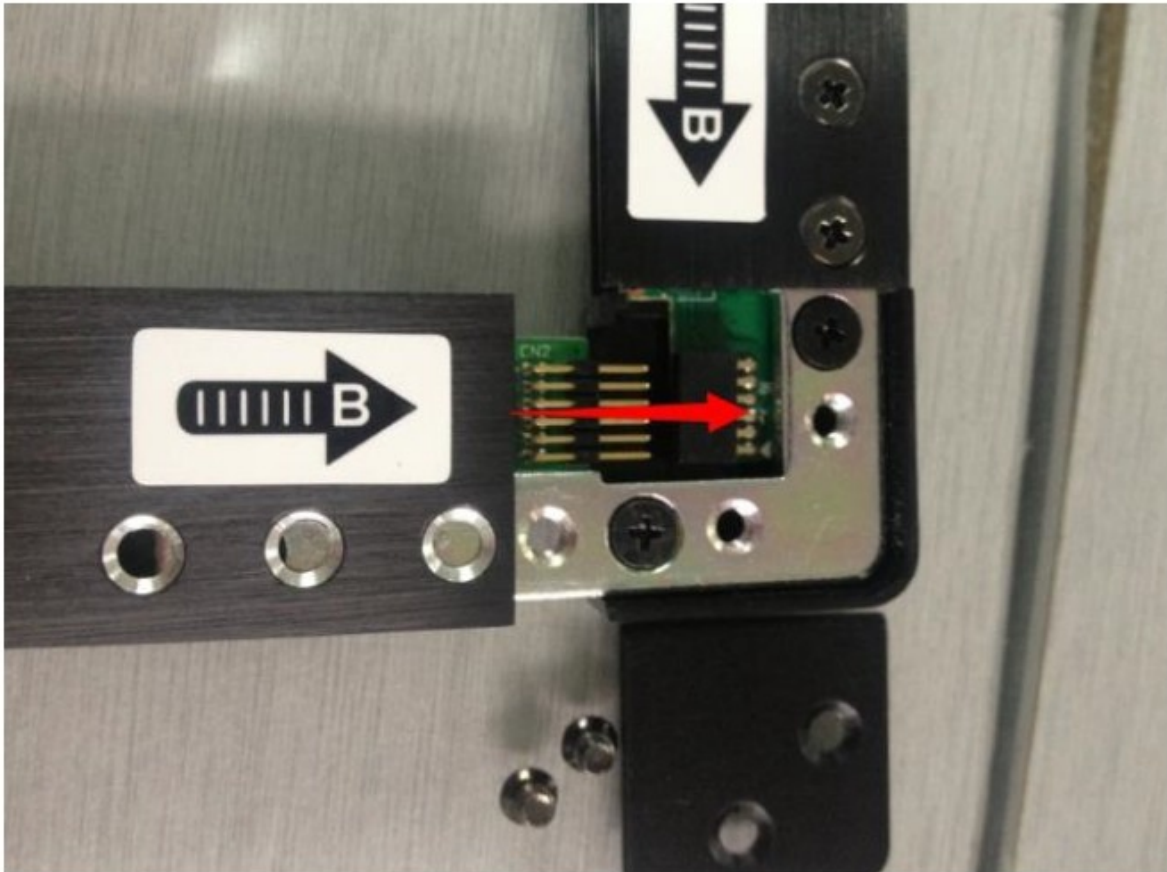
**Step2:**

Open the cover of each corner (as below)



### Step 3:

Connect the spare of the 10 pins connector and fix the cover of the corner and tighten screws.





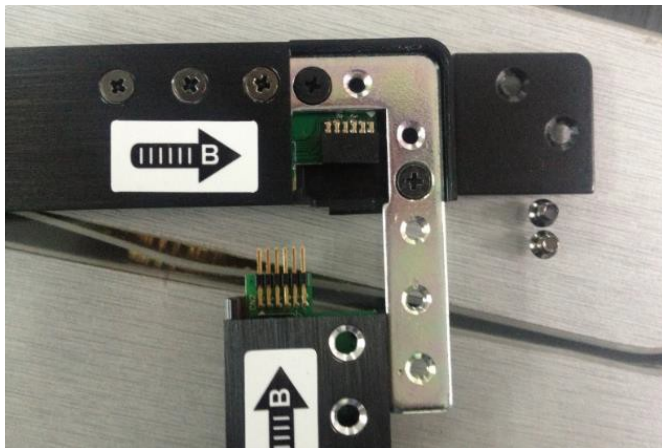
## Step 4 :

According to the same principle, repeat the corner B,C,D and finish the assembling as below:



### ATTENTION:

1. Open cover of corner before connecting/disconnecting frame to avoid broken 10 pins connector !



2. Make sure unit is assembled with corners on **90 degrees and in one surface** to be sure of optimal receiving of transmitted signal.
3. First test the assembled unit on a flat surface or on top of monitor/tv before fixed mounting with tape !!
4. Assemble the unit with adhesive to to front of display with cable outlet on bottom side !